

BLADE MAINTENANCE SWITCH

Owners of Computerised Rotary Saws manufactured by RJ & JJ Owen Warrnambool (Owen's) and supplied by Mitek Australia (formerly Gang-Nail Australia) are advised to read this document carefully. It contains important information concerning the control of a hazard associated with this saw.

HAZARD DESCRIPTION

The machine sequence initiated by the blade maintenance switch on Computerised Rotary Saws is unsafe. This applies to all machines supplied prior to November 2001. On these saws, the saw blade pops up immediately when the saw is switched to maintenance mode. When the blade lifts an operator or bystander may have his/her body or limbs extended over the blade slot, resulting in serious cutting injuries. Furthermore, after normal operation the blade may still be rotating when the saw blade lifts.



WARNING: Operators risk serious cutting injuries. This hazard must be controlled immediately.

HAZARD CONTROL MEASURES

Mitek recommends that this hazard can be controlled in the following ways:

- **As a temporary measure ONLY**, advise operators and maintenance personnel of this hazard immediately. Ensure that procedural controls exist to minimise the risk of an unauthorised person attempting to change or inspect blades. Affix the enclosed caution label next to the maintenance switch.
- A licenced electrician must alter the machine sequence by modifying the saw electrical circuit to meet Owen's recommendations in drawing 290-00200 (see page 2). Retain the warning label at the switch. Owen's have a kit available that provides the necessary electrical components to modify the system.



WARNING: All electrical work must be carried out by a qualified electrician. Isolate the machine before any work is carried out.

After modification, the blade change sequence will be as follows:

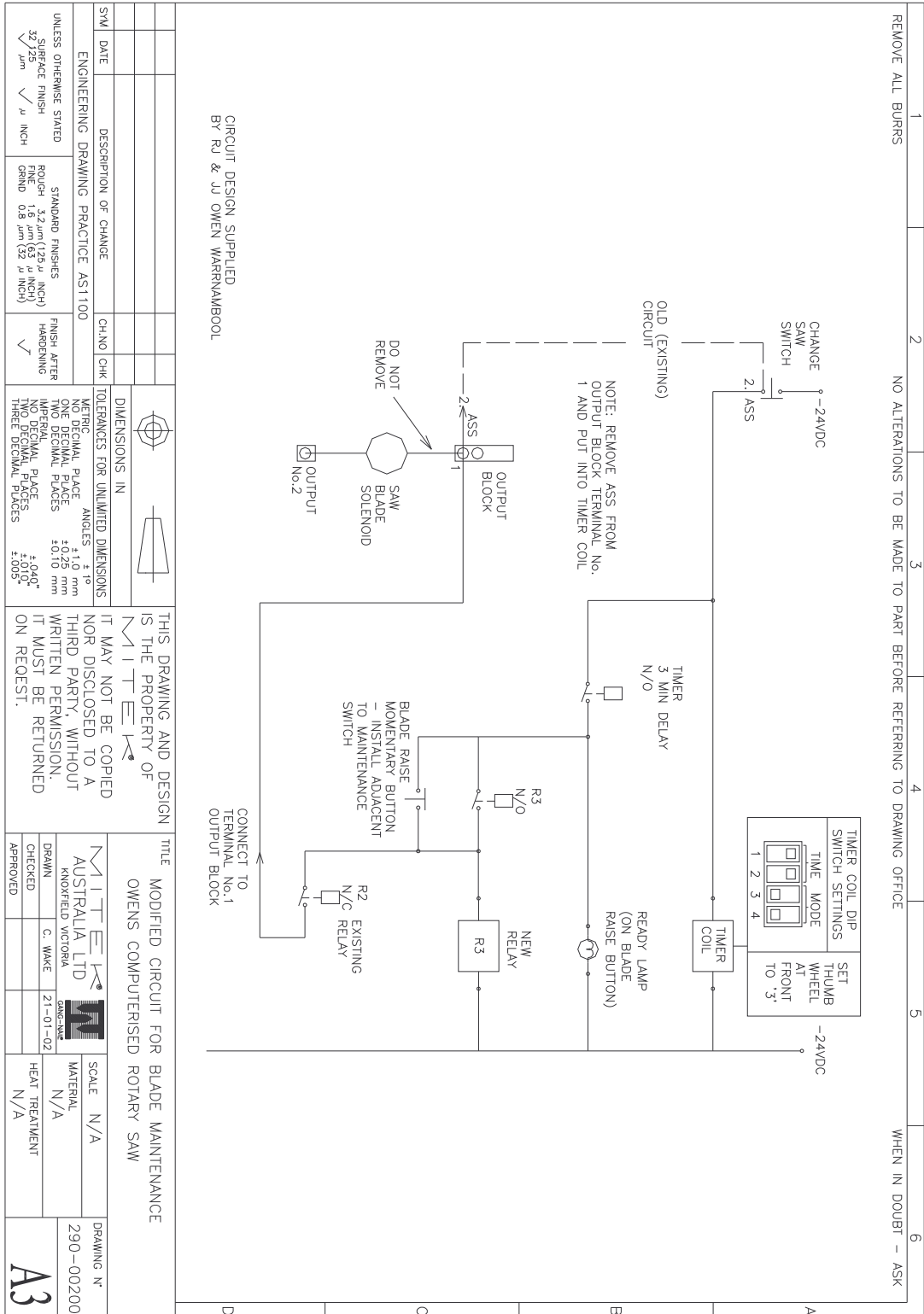
After the blade switch is operated a period of 3 minutes must elapse before a light appears. This light advises the maintenance person that he may initiate the blade lift by pressing a dedicated 'blade change' button. The blade will remain raised until the maintenance switch is released.

IMMEDIATE ACTION REQUIRED

Owners of Computerised Rotary Saws should implement the above-mentioned control procedures immediately.

Queries regarding this Hazard Notice should be directed to the Machinery Support Engineer at MiTek Australia Ltd on Ph: 9730 5555. Written on 21-01-2002.

COMPUTERISED ROTARY SAW



SYMBOL	DESCRIPTION OF CHANGE	CH. NO	CHK	DATE	DATE
ENGINEERING DRAWING PRACTICE AS1100					
UNLESS OTHERWISE STATED					
SURFACE FINISH		STANDARD FINISHES		FINISH AFTER HARDENING	
32 ⁺ 25 ⁻ μm		ROUGH - 3.2 μm (125 μ INCH)		✓	
✓ μ INCH		FINE - 1.6 μm (63 μ INCH)			
		GRAND - 0.8 μm (32 μ INCH)			
DIMENSIONS IN					
TOLERANCES FOR UNLIMITED DIMENSIONS					
METRIC		ANGLES		± 10°	
NO DECIMAL PLACE		± 1.0 mm			
ONE DECIMAL PLACE		± 0.75 mm			
TWO DECIMAL PLACES		± 0.75 mm			
IMPERIAL		NO DECIMAL PLACE		± 0.04"	
ONE DECIMAL PLACE		TWO DECIMAL PLACES		± 0.05"	
THREE DECIMAL PLACES					
THIS DRAWING AND DESIGN IS THE PROPERTY OF MITEK. IT MAY NOT BE COPIED NOR DISCLOSED TO A THIRD PARTY, WITHOUT WRITTEN PERMISSION. IT MUST BE RETURNED ON REQUEST.					
TITLE MODIFIED CIRCUIT FOR BLADE MAINTENANCE OWENS COMPUTERISED ROTARY SAW					
AUSTRALIA LTD KNOXFIELD VICTORIA C. WAKE		DATE: 21-01-02		SCALE: N/A	
DRAWN: C. WAKE		CHECKED:		MATERIAL: N/A	
APPROVED:				HEAT TREATMENT: N/A	
				DRAWING N° 290-00200	
				A3	