

# Eliminator

## ELIMINATES T-STIFFENERS OR WEB BRACES ON LONG COMPRESSION WEBS

The Eliminator MkIII is designed to replace timber T-stiffeners and web ties on long webs or compression webs which carry high loads.



For durability information, please refer to **Corrosion Resistance of MiTek Metal Connectors**, available on the MiTek website at [mitek.com.au](http://mitek.com.au)

The design of webs with the Eliminator MkIII is included in the MiTek truss design software.

### USES

- Stiffens long slender webs under compression against buckling out of plane.
- Replaces timber T-Stiffeners and lateral binders.
- Useful in circumstances where web braces cannot be tied back to a rigid part of the structure.

### ADVANTAGES

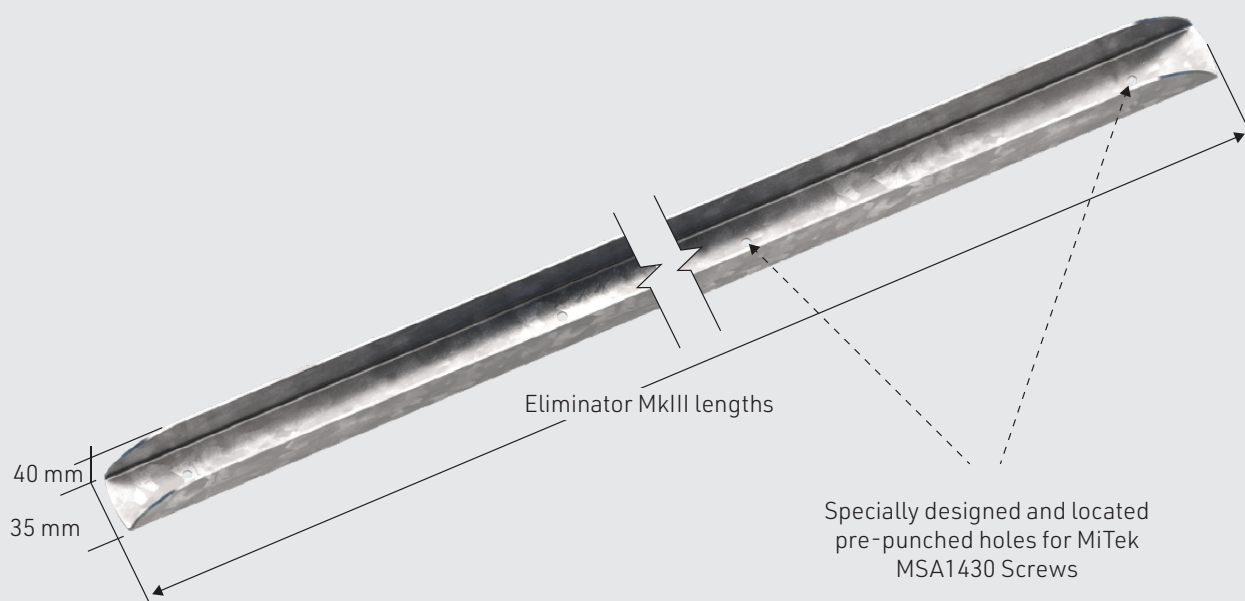
- May be fitted to web prior to truss assembly, or immediately after truss assembly at plant, or later on site.
- Width matches timber thickness to facilitate stacking of trusses.
- Rounded ends to ease fitting in tight places, and prevent injury.
- Easy fixing with screws.



This Certified Engineering Building Product complies with the National Construction Code and Australian Standards.

## SPECIFICATIONS

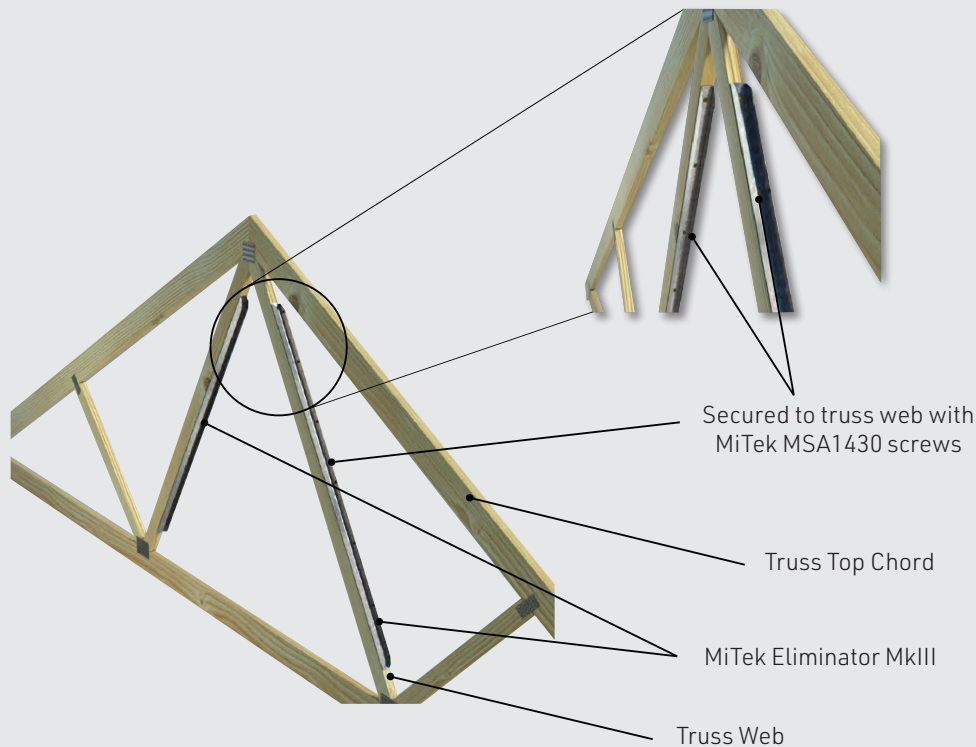
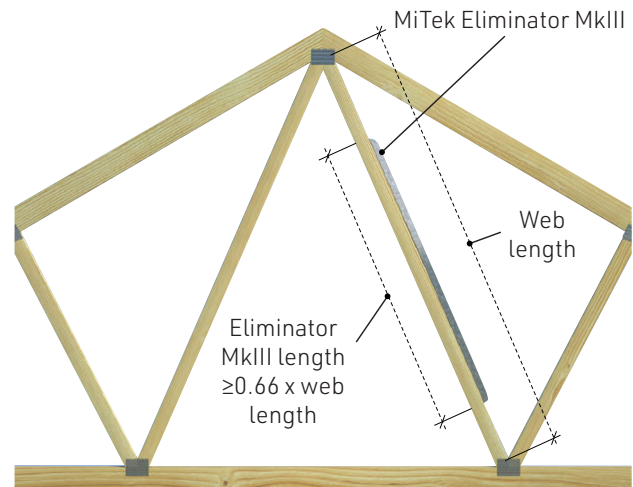
Steel Grade	G2
Thickness (Total Coated)	2.0 mm
Galvanised Coating	Z275
Screws	MSA1430 - MiTek No. 14 x 30mm anti-split self-drilling HD galvanised screws with Ruspert® coating
Product Code	EC1800 - 1800mm EC2400 - 2400mm EC3000 - 3000mm



Now made with thicker steel, the new heavy duty Eliminator MkIII is stronger and more robust than ever before. The pre-punched holes at 300mm centres make installation easy to follow and fix with MiTek screws. The rounded ends make it safer to handle and easier to fit in tight situations. Its slender 35mm width fits within common timber thickness to facilitate truss stacking for storage and transportation. The length of an Eliminator MkIII should be at least two thirds the length of the web it is attached to.

## INSTALLATION

1. Position the Eliminator MkIII in the middle of the web length along one edge.
2. Make sure the timber web is straight and flush with the Eliminator MkIII before fixing yellow MiTek MSA 1430 screws through every pre-punched hole.
3. If it is a multi-ply truss, an Eliminator MkIII shall be fitted onto each ply.
4. If a double Eliminator MkIII is specified, they should be fitted on both edges on opposite sides of each web.
5. The Eliminator MkIII does not need to be cut - the nearest stock length to the actual web length will normally be adequate. However, the Eliminator MkIII should cover at least 66% of web length and be placed centrally on the web.



This datasheet is available  
anytime, anywhere! - Download



**EASYCAT**  
FREE APP

